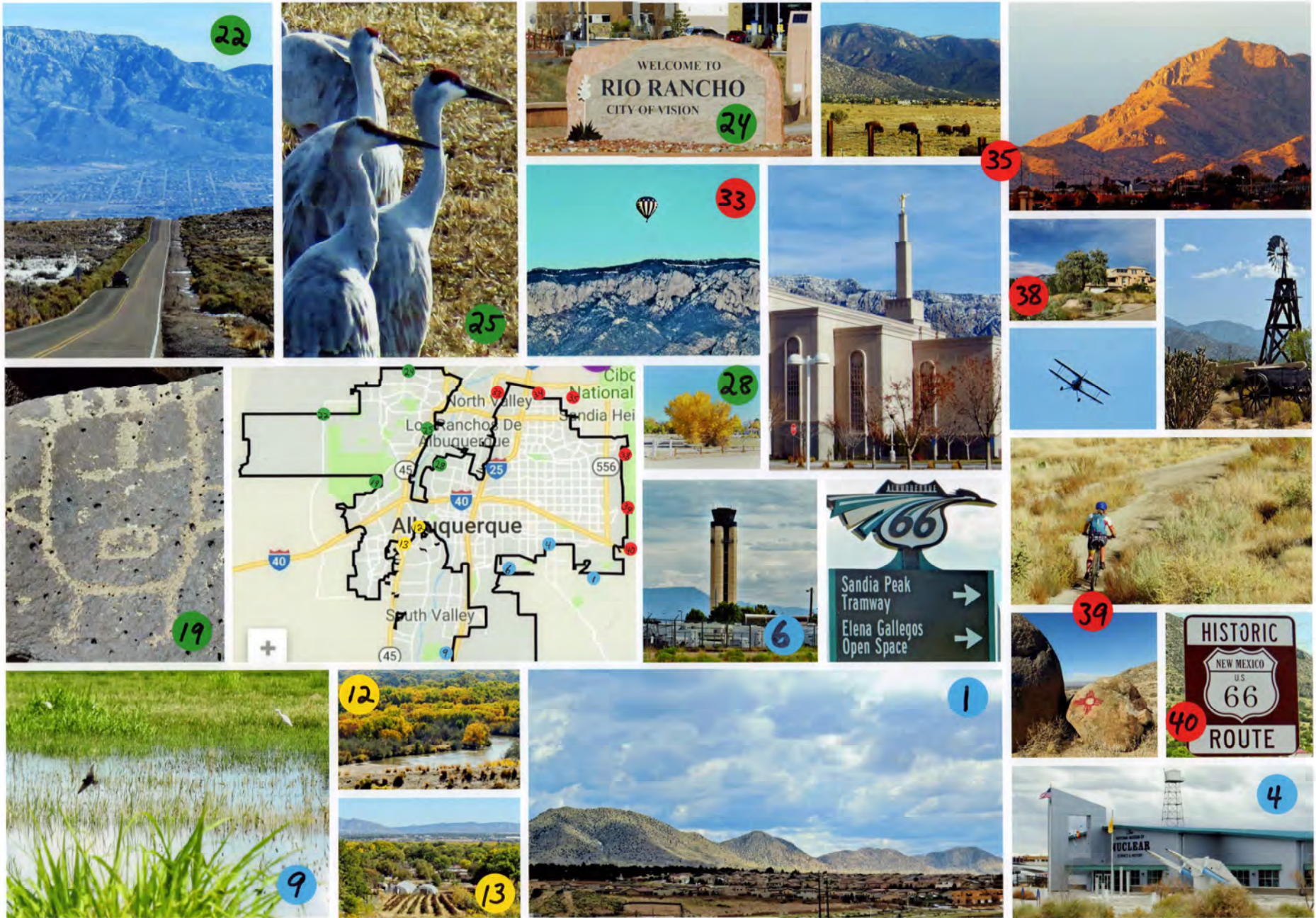


Albuquerque City Limits



ALBUQUERQUE'S CURRENT CITY LIMITS ARE DEFINED BY NATURAL AND GEO-POLITICAL BOUNDARIES: NATIVE AMERICAN PUEBLOS, INVIOLEATE MILITARY LANDS, THE SANDIA MOUNTAINS AND CIBOLA NATIONAL FOREST. THESE CONSTRAINTS CREATE THE CITY'S "DISTINGUISHABLE EDGE" NOTED BY AUTHOR VB PRICE.

**Albuquerque City Limits "The Distinguishable Edge" +++
photos by Arthur O'Donnell www.albuquerquecitylimits.com**

Albuquerque's current municipal footprint has been compiled like a jigsaw puzzle with 842 pieces of irregularly shaped parcels via annexation since 1880. Together, they form today's perimeter.

Stop	Point on Map	Street Address	in/out	Longitude	Latitude	Elevation	Year Annexed	Ordinance	Ord Date
1	Four Hills & Manzano Open Space	End of Stagecoach Road.	in	N 35 02.746	W -106 28.924	5966'	1969	116-1969	9/15/1969
2	Juan Tabo end	@ Pompano	in	N 35 02.587	W -106 31.054	5490'	2004	23-2004	4/19/2004
3	Tijeras Arroyo Dead end @ Blue Ribbon Rd	Juan Tabo Hills West	in	N 35 02.761	W -106 31.172	5494'	2011	O-2011-019	7/5/2011
4	Nuclear Museum	601 Eubank Blvd SE	out	N 35 04.025	W -106 31.998	5465'	N/A	N/A	N/A
5	Bullhead Memorial Park/VA Hospital/Gibson	1606 San Pedro Dr. SE	out	N 35 03.196	W -106 34.691	5353'	N/A	N/A	N/A
6	Sunport North	Gibson @ Girard	in	N 35 02.390	W -106 36.810	5323'	1966	2627	9/30/1967
7	Mesa del Sol	Along University Blvd.	in	N 34 59.913	W -106 37.298	5309'	1993	05 1993	1/13/1993
8	Isleta I-25 Valley Livestock	7715 Broadway SW	in/out	N 34 58.600	W -106 39.481	5015'	1993	05 1993	1/13/1993
9	Valle del Oro National Wildlife Refuge entry	entry from 2nd St.	out	N 34 58.864	W -106 40.036	4918'	N/A	N/A	N/A
10	Arno St SE @ Wesmeco Dr. SE	507 Wesmeco and 2841 Arno houses	in/out	N 35 03.012	W -106 38.650	4950'	1966	N/A	9/30/1966
11	Arenal Rd. SW	Riverview Drive SW	in/out	N 35 03.189	W -106 39.766	4940'	1966	N/A	9/30/1966
12	Central Ave. to Bridge corridor	various	in	N 35 03.778	W -106 39.677	5000'	1948	N/A	9/11/1948
13	Crestview Bluff open space	Off Central @ Gonzales	in	N 35 04.653	W -106 41.586	5021'	1950	N/A	3/27/1950
14	Sunshine Country Mobile Home Park	4000 Blake Rd SW	in	N 35 02.223	W -106 42.951	4982'	1998	6 1998	2/24/1998
15	Valley Gardens	Coors Blvd @ Gun Club Rd.	in	N 35 00.718	W -106 42.791	4915'	1964	ORD 2478	1/31/1964
16	Dennis Chaves Blvd @118th SW	Intersection & Rain Chaser monument	in/out	N 35 01.450	W -106 48.185	5224'	2003	33-2003	6/20/2003
17	Del Monte Trail @ Pecos Place - Rio Puerco Trail	dead ends	in	N 35 02.992	W -106 45.307	5284'	1960	ORD 1170	10/24/1960
18	Central Western Limit	About 110th and Central Ave.	in/out	N 35 04.219	W -106 45.148	5305'	1950	N/A	3/27/1950
19	Petroglyph Monument - Rinconada Access Trail	Unser Blvd NW @ St Joseph Ave.	in	N 35 07.622	W -106 43.519	5179'	1977	N/A	5/20/1977
20	Shooting Range Access Rd.	Shooting Range Road	in	N 35 07.991	W -106 52.165	6002'	1997	43-1997	11/26/1997
21	Double Eagle Airport	Atrisco Vista Blvd.	in	N 35 09.437	W -106 47.255	5783'	1980	16-1980	4/9/1990
22	Volcano Ranch Park	Atrisco Vista @ Paseo del Norte	out	N 35 11.319	W -106 46.995	5726'	N/A	N/A	N/A
23	Universe @ McMahon Blvd.	CNM Campus	in/out	N 35 12.719	W -106 43.672	5408'	1985	37-1985	7/12/1985
24	Rio Rancho Border	Black Arroyo Blvd. & Unser Blvd.	out	N 35 13.165	W -106 41.938	5300'	N/A	N/A	N/A
25	Bosque Center @ Coors Blvd	6500 Coors Blvd NW	in	N 35 09.691	W -106 40.500	5000'	1988	31-1988	5/25/1988
26	Pueblo Montano chainsaw sculpture park	Montano @ Coors Blvd.	in	N 35 08.874	W -106 41.043	4978'	2001	38-2001	8/6/2001
27	San Antonio Oxbow Open Space	end of Namaste Road	in	N 35 08.080	W -106 41.684	5018'	1985	BC	10/3/1985
28	Rio Grande Nature Center	State Park @ Candelaria	out	N 35 08.164	W -106 41.672	5015'	N/A	N/A	N/A
29	Los Poblanos Open Space	Montano & Rio Grande Blvd.	in	N 35 08.645	W -106 39.430	4957'	1998	36-1998	11/24/1998
30	Los Ranchos de Albuquerque/Alvarado Elementary School	1100 Solar Road NW	in	N 35 09.112	W -106 39.290	4975'	1948	N/A	8/18/1948
31	Edith and Propane	No. Diversion Channel	in	N 35 11.150	W -106 37.900	5010'	1988	71-1988	12/23/1988
32	PNM Reeves Generating Station	4400 Paseo del Norte @ Pueblo	in	N 35 10.374	W -106 35.98	5100'	1988	71-1988	12/23/1988
33	Balloon Fiesta Park	4401 Alameda NE/9201 Balloon Museum	in	N 35 11.139	W -106 39.903	5096'	1988	71-1988	12/23/1988
34	Louisiana Rd curves at Elena (Coronado Air Field)	Elena Road	in	N 35 11.906	W -106 34.124	5730'	1985	64-1985	10/21/1985
35	North Albuquerque Acres & Sandia Bison herd	Paseo del Norte @ Holbrooke & Palomas	in	N 35 10.467	W -106 31.942	5634'	2003	10 2003	4/3/2003
36	San Antonio Road	1501 San Antonio Rd NE	in	N 35 09.573	W -106 30.689	5850'	1978	83-1978	11/2/1978
37	Simms Park @ Gallegos Picnic area	US Forests Service Trail 365	in/out	N 35 09.717	W -106 28.418	6372'	1993	24-1993	5/24/1993
38	Highest elevation residences	Paso del Puma	in	N 35 08.000	W -106 28.909	6400'	1993	24-1993	5/24/1993
39	Embudo Canyon Trailhead	Indian School Rd./Hanes	in	N 35 05.945	W -106 28.804	6153'	1996	O 54	11/29/1996
40	Route 66 Open Space	Central @ Highway 333	in	N 35 03.908	W -106 29.215	5740'	1973	188-1971	8/27/1973