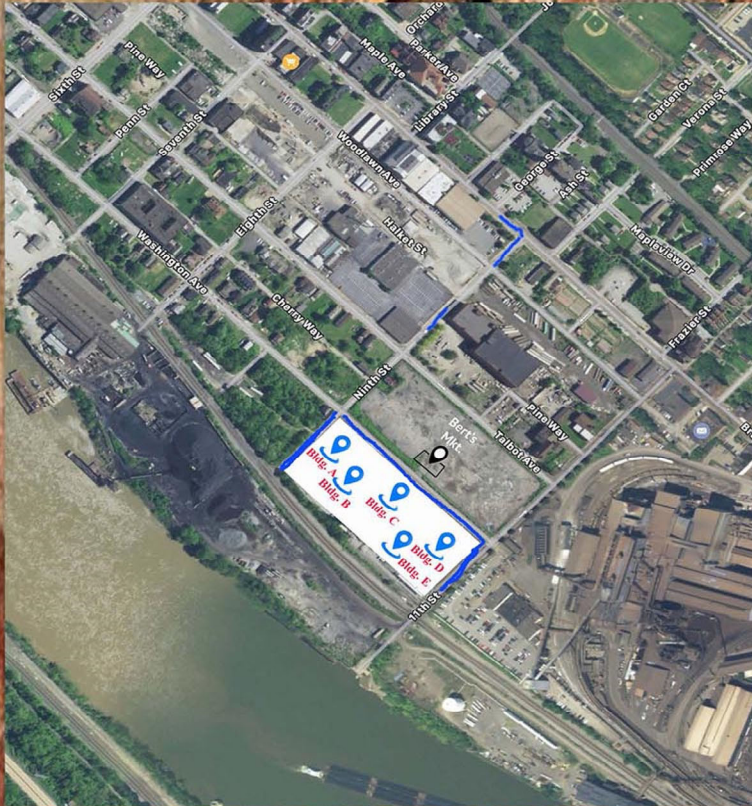


# TALBOT TOWERS

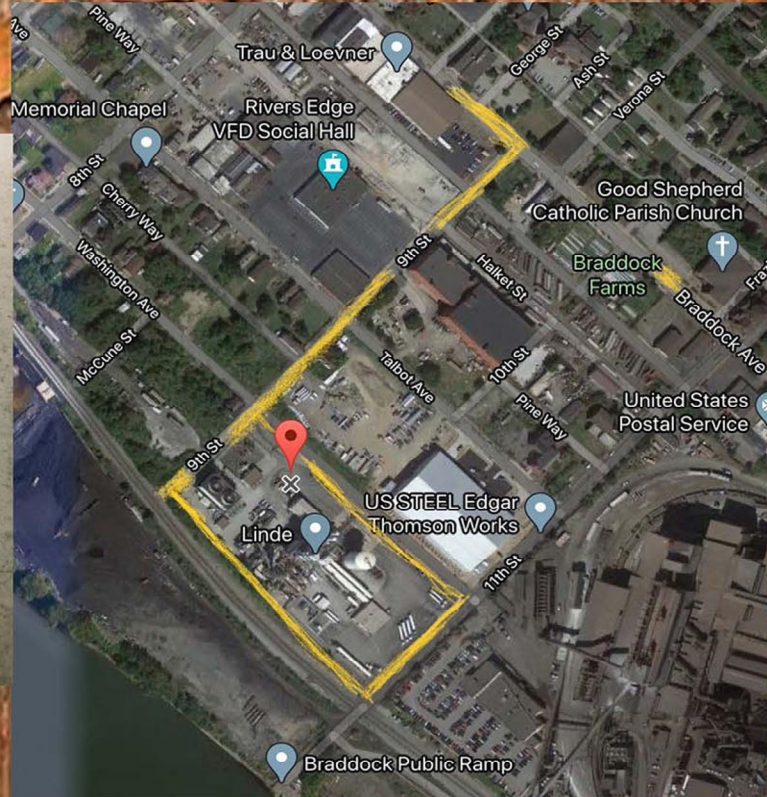


Built in the 1950's, Talbot Towers was a 210 unit public housing project located on Washington Street in Braddock. In the early days, Talbot Towers was known for being a unique multi-cultural housing complex, with families living together in harmony. The community was tightknit with neighbors and families looking out for each other. Braddock was a true walkable community with many people, living, shopping, and working there. Talbot Towers was demolished in 1990's.

# TALBOT TOWERS



Alberta & Eugene Reaves



Current View

## View (1950's - 1990's)

My parents Alberta & Eugene owned Bert's Market also located on Washington Street across from Talbot Towers, building C. Our store provided needed essentials, and employment opportunities for numerous community youth for nearly 40 yrs. This is a cherished memory that I will keep forever.